



XGA52ACJ

MOBILE ELEVATING WORK PLATFORM

Comply with ANSI/CSA



XGA52ACJ

MOBILE ELEVATING WORK PLATFORM

FEATURES

MEASUREMENTS

18 m (59' 1") working height
Without Limited: 256kg (564 lb.) lift capacity
Limited: 350kg (771 lb.) lift capacity

PRODUCTIVITY

1.83 m x 0.76 m (6' x 2' 6") steel platform
2WD
Solid tire
Self-leveling platform
Hydraulic platform rotation
Fully proportional controls
Drive enable
Horn
Hour meter
Tilt alarm
Descent alarm
355° non-continuous turntable rotation
Locking turntable covers
Zero tailswing
Emergency power unit
Alarm package
Emergency stop
Dual flashing beacons

POWER

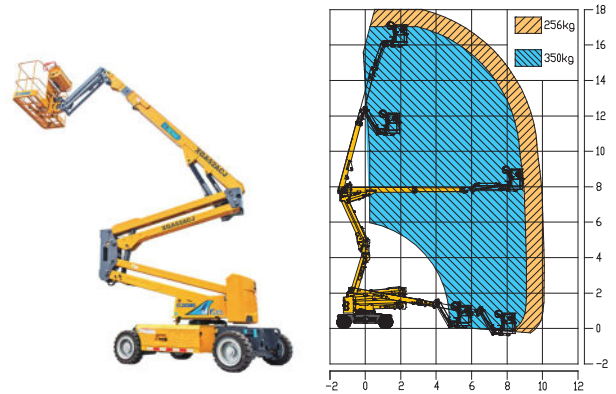
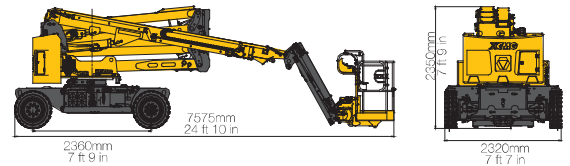
12V auxiliary power (DC)
420 Ah/48 V DC power source

HIGHLIGHT

- With "Σ" shaped articulated boom, this machine can able to improve operating efficiency; The turning radius is as low as 4.7m, with flexible maneuverability and challenging operation in narrow space;
- With long endurance design, this machine equippes with 48V, 420Ah large capacity battery, to provide longer endurance;
- Advanced two-wheel AC driving technology, steering differential control technology, greatly reduce tire wear and motor overload rate;
- The combined application of AC pump control and proportional control technology provides users with a more secure and stable operation experience;
- Green environmental protection, zero emission, low noise, no-marking driving, suitable for indoor clean environment construction;
- This machine is contralled directly through fully proportional control design, which is precise and effective. Whit tilt alarm of the lower frame, platform overload alarm and emergence lowering, flexibly start or stop could be achieve.

OPTIONS

Power supply to platform
Compressed air line to platform
Anti-impact bracket for platform
Rough terrain foam-filled tires
4WD



MAIN PARAMETER

Item	Metric	Imperial
Overall dimensions (Lx Wx H)	7.575m x 2.32m x 2.35m	24 ft 10 in x 7 ft 7 in x 7 ft 9 in
Working platform overall dimensions	1.83 x 0.76 x 1.15	6 ft x 2 ft 6 in x 3 ft 9 in
Maximum speed	4.8km/h	2.98 mph
Maximum theoretical gradeability	30%	30%
Minimum external turning radius	4.7m	15 ft 5 in
Ground clearance (center)	0.25m	9.84 in
Wheel base	2.36m	7 ft 9 in
Total machine weight	8600kg	18960 lbs
Maximum working height	18m	59 ft 1 in
Maximum platform height	16m	52 ft 6 in
Maximum working range	10.1m	33 ft 2 in
Maximum net spanning height	7.6m	24 ft 11 in
Luffing scope of Boom No. 1	0°~65°	0°~65°
Luffing scope of Boom No. 2	-11°~75°	-11°~75°
Luffing scope of crank arm	-60°~70°	-60°~70°
Platform slewing	160°	160°
Turntable slewing angle	355 discontinuous slewing	355 discontinuous slewing
Maximum load	256kg without limit / 350kg with limit	564lbs without limit / 771lbs with limit
Maximum rearward slewing	0m	0 ft
Control system	12V DC proportional control	12V DC proportional control
Emergency control unit	12V DC battery	12V DC battery
Tire	250-15/7.5 solid tire (optional fill off-road tire)	250-15/7.5 solid tire (optional fill off-road tire)
Weight detection	Standard configuration	Standard configuration
Axle balance system	Standard configuration	Standard configuration
Platform lowering speed	0.1m/s~ 0.3m/s	0.22mph~0.67mph
Telescopic speed of Boom No 2	0.1m/s~ 0.3m/s	0.22mph~0.67mph
Slewing speed	0.5 ~ 1 rpm	0.5 ~ 1 rpm
Power source	420 Ah/48 V (DC)	420 Ah/48 V (DC)
Auxilliary power unit	2.3kw/12 V (DC)	3.1hp/12 V (DC)
Hydarulic tank capacity	82L	82L